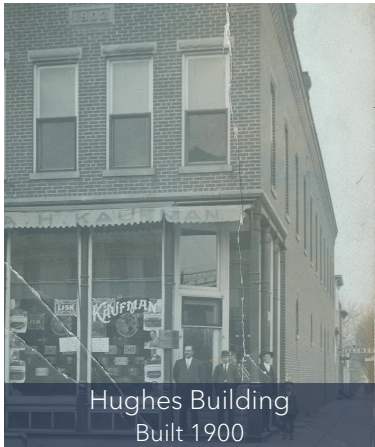


# Nappanee History Scavenger Hunt

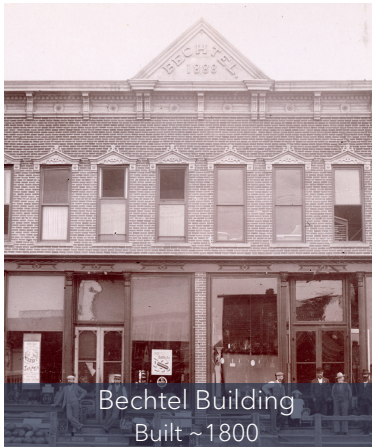
Match the buildings from Nappanee history to the current buildings of today. While traveling around town, visit each location and take a photo of the current building or business. Email the photos to [nappaneehistory@nappaneelibrary.org](mailto:nappaneehistory@nappaneelibrary.org) or share them on Instagram and tag @nappaneehistory

**Submit all 12 photos for a chance to win a Taste of Nappanee Basket.**

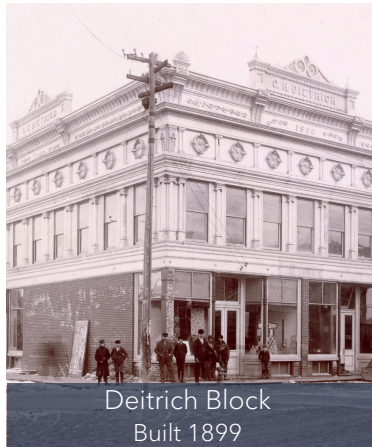
**Photos must be submitted by Friday, June 30, 2023.**



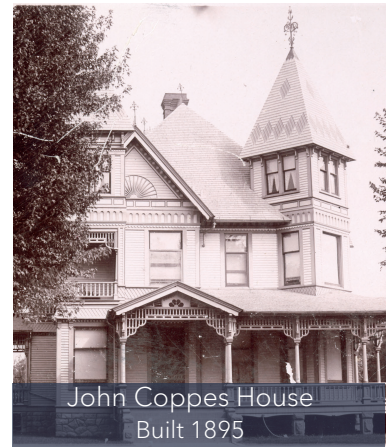
Hughes Building  
Built 1900



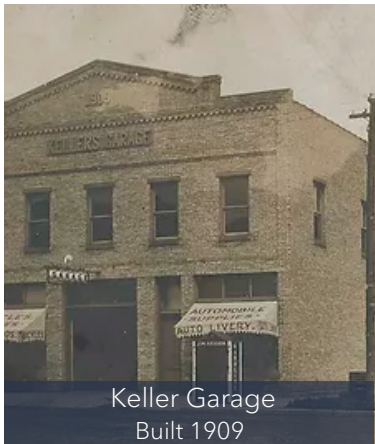
Bechtel Building  
Built ~1800



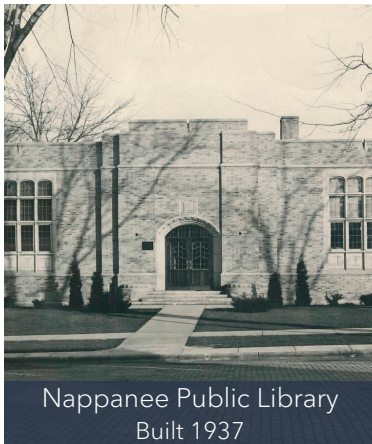
Deitrich Block  
Built 1899



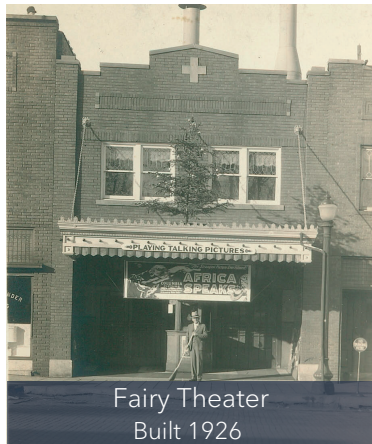
John Coppes House  
Built 1895



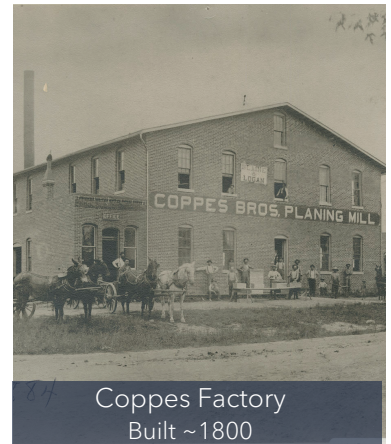
Keller Garage  
Built 1909



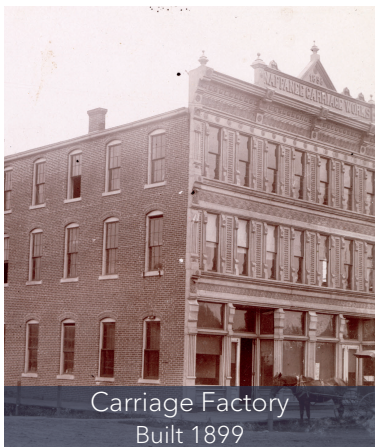
Nappanee Public Library  
Built 1937



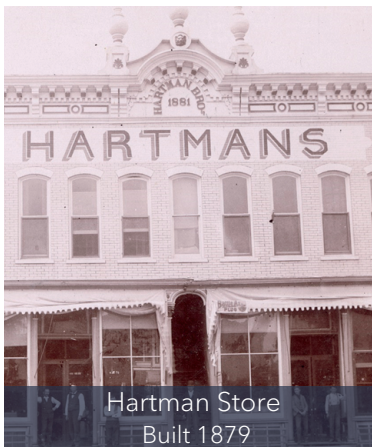
Fairy Theater  
Built 1926



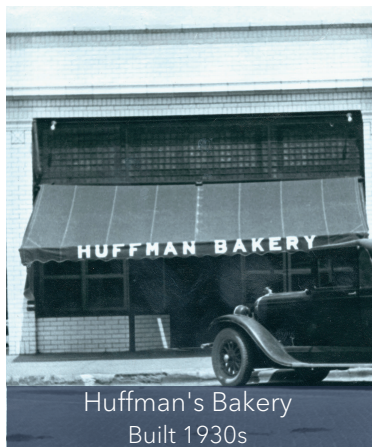
Coppes Factory  
Built ~1800



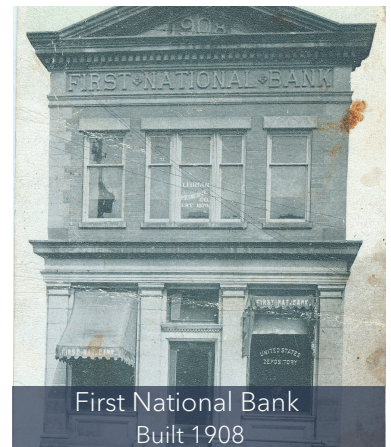
Carriage Factory  
Built 1899



Hartman Store  
Built 1879



Huffman's Bakery  
Built 1930s



First National Bank  
Built 1908



For more information visit:  
[www.nappaneelibrary.org/elhc](http://www.nappaneelibrary.org/elhc)

 Evelyn Lehman Culp  
HERITAGE COLLECTION

Sponsored in part by:

